

阅读申明

- 1.本站收集的数据手册和产品资料都来自互联网，版权归原作者所有。如读者和版权方有任何异议请及时告之，我们将妥善解决。
- 2.本站提供的中文数据手册是英文数据手册的中文翻译，其目的是协助用户阅读，该译文无法自动跟随原稿更新，同时也可能存在翻译上的不当。建议读者以英文原稿为参考以便获得更精准的信息。
- 3.本站提供的产品资料，来自厂商的技术支持或者使用者的心得体会等，其内容可能存在描述上的差异，建议读者做出适当判断。
- 4.如需与我们联系，请发邮件到marketing@iczoom.com，主题请标有“数据手册”字样。

Read Statement

1. The datasheets and other product information on the site are all from network reference or other public materials, and the copyright belongs to the original author and original published source. If readers and copyright owners have any objections, please contact us and we will deal with it in a timely manner.
2. The Chinese datasheets provided on the website is a Chinese translation of the English datasheets. Its purpose is for reader's learning exchange only and do not involve commercial purposes. The translation cannot be automatically updated with the original manuscript, and there may also be improper translations. Readers are advised to use the English manuscript as a reference for more accurate information.
3. All product information provided on the website refer to solutions from manufacturers' technical support or users the contents may have differences in description, and readers are advised to take the original article as the standard.
4. If you have any questions, please contact us at marketing@iczoom.com and mark the subject with "Datasheets" .

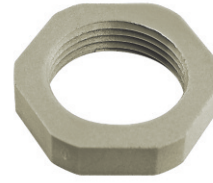
Locknuts *Polyamide / Stainless Steel*

Material:

- Polyamide 6
- 25 % glass fiber reinforced

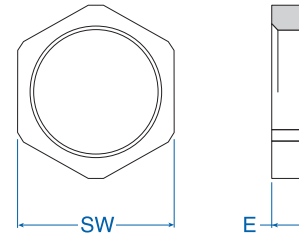
Characteristic feature:

- PG / metric and NPT thread



Temperature Range
-30 to 120°C
(-22 to 248°F)

| Thread | Thickness (E) mm | SW mm | Cat. No. Light grey | Cat. No. Black | Std. Pk. |
|--|------------------|-------|---------------------|----------------|----------|
| PG (once according to DIN 46 320) | | | | | |
| PG 7 | 5 | 19 | 7211 881 | 7211 851 | 50 |
| PG 9 | 5 | 22 | 7211 882 | 7211 852 | 50 |
| PG 11 | 5 | 24 | 7211 883 | 7211 853 | 50 |
| PG 13.5 | 6 | 27 | 7211 884 | 7211 854 | 50 |
| PG 16 | 6 | 30 | 7211 885 | 7211 855 | 50 |
| PG 21 | 6.5 | 36 | 7211 886 | 7211 856 | 20 |
| PG 29 | 7.5 | 46 | 7211 887 | 7211 857 | 20 |
| PG 36* | 8 | 60 | 7211 888 | 7211 858 | 10 |
| PG 42* | 9 | 65 | 7211 889 | 7211 859 | 5 |
| PG 48* | 9.5 | 70 | 7211 890 | 7211 860 | 5 |
| Metric | | | | | |
| M 12 x 1.5 | 5 | 19 | 7211 979 | 7211 974 | 50 |
| M 16 x 1.5 | 5 | 22 | 7211 980 | 7211 975 | 50 |
| M 20 x 1.5 | 5 | 24 | 7211 981 | 7211 976 | 50 |
| M 25 x 1.5 | 6 | 30 | 7211 982 | 7211 977 | 50 |
| M 32 x 1.5 | 7.5 | 38 | 7211 983 | 7211 978 | 50 |
| M 40 x 1.5 | 8 | 50 | 7211 984 | 7211 990 | 20 |
| M 50 x 1.5* | 9 | 60 | 7211 985 | 7211 991 | 10 |
| M 63 x 1.5* | 10 | 75 | 7211 986 | 7211 992 | 5 |
| NPT | | | | | |
| NPT 3/8" | 5 | 22 | 7211 485 | 7211 495 | 50 |
| NPT 1/2" | 6 | 27 | 7211 486 | 7211 496 | 50 |
| NPT 3/4" | 6.5 | 36 | 7211 487 | 7211 497 | 25 |
| NPT 1" | 7 | 41 | 7211 488 | 7211 498 | 20 |



* Not glass fiber reinforced

Material:

- Stainless Steel
- 1.4404 / INOX 316L

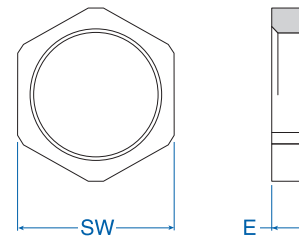
Characteristic feature:

- Metric thread



Stainless Steel

| Thread | Thickness (E) mm | SW mm | Cat. No. | Std. Pk. |
|---------------|------------------|-------|----------|----------|
| Metric | | | | |
| M 12 x 1.5 | 3 | 15 | 6010112 | 50 |
| M 16 x 1.5 | 3 | 19 | 6010116 | 50 |
| M 20 x 1.5 | 3.5 | 24 | 6010120 | 50 |
| M 25 x 1.5 | 3.5 | 30 | 6010125 | 25 |
| M 32 x 1.5 | 4.5 | 35 | 6010132 | 20 |
| M 40 x 1.5 | 4.5 | 45 | 6010140 | 10 |
| M 50 x 1.5 | 5.5 | 55 | 6010150 | 10 |
| M 63 x 1.5 | 6 | 70 | 6010163 | 5 |



This is one of our most popular series and is usually kept in stock.

Material:

- Nickel-plated brass

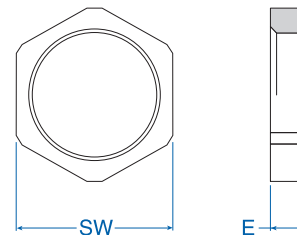
Characteristics:

- PG and Metric thread



Nickel-Plated Brass

| Thread | Thickness (E) mm | SW mm | Cat. No. | Std. Pk. |
|---|------------------|-------|----------|----------|
| PG (once according to DIN 46320) | | | | |
| PG 7 | 2.9 | 15 | 6000070 | 50 |
| PG 9 | 2.9 | 18 | 6000096 | 50 |
| PG 11 | 2.9 | 21 | 6000118 | 50 |
| PG 13.5 | 3.1 | 23 | 6000134 | 50 |
| PG 16 | 3.1 | 26 | 6000169 | 50 |
| PG 21 | 3.6 | 32 | 6000215 | 20 |
| PG 29 | 4.1 | 41 | 6000290 | 20 |
| PG 36 | 5.1 | 51 | 6000363 | 10 |
| PG 42 | 5.1 | 60 | 6000428 | 5 |
| PG 48 | 5.6 | 64 | 6000487 | 5 |
| Metric | | | | |
| M 12 x 1.5 | 3 | 15 | 6004121 | 50 |
| M 16 x 1.5 | 3 | 20 | 6004164 | 50 |
| M 20 x 1.5 | 3.5 | 24 | 6004202 | 50 |
| M 25 x 1.5 | 3.5 | 30 | 6004253 | 25 |
| M 32 x 1.5 | 4.5 | 35 | 6004326 | 20 |
| M 40 x 1.5 | 4.5 | 45 | 6004407 | 10 |
| M 50 x 1.5 | 4.5 | 55 | 6004504 | 10 |
| M 63 x 1.5 | 6 | 70 | 6004636 | 5 |


Material:

- Nickel-plated brass

Characteristics:

- PG and Metric thread

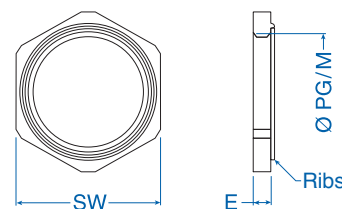
Applications:

- EMC applications



Nickel-Plated Brass, Ribbed

| Thread | Thickness (E) mm | SW mm | Cat. No. | Std. Pk. |
|---------------|------------------|-------|----------|----------|
| PG | | | | |
| PG 7 | 2.9 | 15 | 6011007 | 50 |
| PG 9 | 2.9 | 18 | 6011009 | 50 |
| PG 11 | 3.1 | 21 | 6011011 | 50 |
| PG 13.5 | 3.1 | 23 | 6011013 | 50 |
| PG 16 | 3.1 | 26 | 6011016 | 50 |
| PG 21 | 3.6 | 32 | 6011021 | 20 |
| PG 29 | 4.1 | 41 | 6011029 | 20 |
| PG 36 | 5.1 | 51 | 6011036 | 10 |
| PG 42 | 5.1 | 60 | 6011042 | 10 |
| PG 48 | 5.6 | 64 | 6011048 | 10 |
| Metric | | | | |
| M 12 x 1.5 | 3 | 15 | 6011112 | 50 |
| M 16 x 1.5 | 3 | 20 | 6011116 | 50 |
| M 20 x 1.5 | 3.5 | 24 | 6011120 | 50 |
| M 25 x 1.5 | 3.5 | 30 | 6011125 | 25 |
| M 32 x 1.5 | 4.5 | 35 | 6011132 | 20 |
| M 40 x 1.5 | 4.5 | 45 | 6011140 | 10 |
| M 50 x 1.5 | 5.5 | 55 | 6011150 | 10 |
| M 63 x 1.5 | 6 | 70 | 6011163 | 10 |



This is one of our most popular series and is usually kept in stock.

Mouser Electronics

Authorized Distributor

Click to View Pricing, Inventory, Delivery & Lifecycle Information:

Altech:

[6004164](#) [7211 485](#) [7211 486](#) [7211 487](#) [7211 488](#) [7211 495](#) [7211 496](#) [7211 497](#) [7211 498](#) [7211 851](#) [7211 852](#)
[7211 853](#) [7211 854](#) [7211 855](#) [7211 856](#) [7211 857](#) [7211 858](#) [7211 859](#) [7211 860](#) [7211 881](#) [7211 882](#) [7211 883](#)
[7211 884](#) [7211 885](#) [7211 886](#) [7211 887](#) [7211 888](#) [7211 889](#) [7211 890](#) [7211 974](#) [7211 975](#) [7211 976](#) [7211 977](#)
[7211 978](#) [7211 979](#) [7211 980](#) [7211 981](#) [7211 982](#) [7211 983](#) [7211 984](#) [7211 985](#) [7211 986](#) [7211 990](#) [7211 991](#)
[7211 992](#) [6010163](#) [6010150](#) [6010132](#) [6010112](#) [6010140](#) [6010125](#) [6010120](#) [6010116](#)